



Developed By :
LIBERTY INFRA
Regd. Office : Liberty Complex, 17th Mile Stone,
G.T. Karnal Road, Gharaunda 132 114 Haryana
Site Office : Windsor Homes, Village Simla Molana,
Sector-40, Panipat 132 103 Haryana
Ph.: 93506 75099

libinfraco@gmail.com | www.libertywindsorhomes.com

Disclaimer : This brochure is not a legal document and only describes the developer's intended conceptual plan.
Specifications and details provided are tentative and may change at sale discretion of developer and /or architects.



.... CRAFTING A BETTER TOMORROW



Welcome to a life free of chaos...

A new kind of lifestyle awaits. Here,
spacious floor plans take priority
over the number of villas.
It means that a select few and
get a **whole lot more.**





WE BEAR NO RESPONSIBILITY FOR INCORRECT DETAILS. PLEASE COMPARE WITH DEPARTMENT MAP.

WINDSOR HOMES

Village Simla Molana, Sector-40, Panipat

HRERA : PKL-PNP-576-2024
Dated : 22-4-24



FEATURES & AMENITIES



GATED
COMMUNITY



MULTIPLE &
WIDE ROADS



3 TIER
SECURITY



STREET
LIGHTS



WATER
BODIES



LANDSCAPE
GREEN SPACE



JOGGING
TRACK



BOX
CRICKET



OPEN
FITNESS ZONE



GARDEN
AUDIO SYSTEM



CONVENIENT
SHOPPING



RELIGIOUS
BUILDING

PLOTS DETAIL

TYPE	SIZE (MTR.)	AREA (SQMTR.)	AREA (SQYRDS.)	NO. OF PLOTS
A1	8.200x15.000	123.00	147.10	1
A	7.970x15.00	119.55	142.98	21
B	7.822x16.000	125.15	149.68	32
C	8.281x13.833	114.55	137.00	40
D	8.039x13.650	109.73	131.24	26
E	8.511x12.500	106.93	127.89	3



BLOCK - A

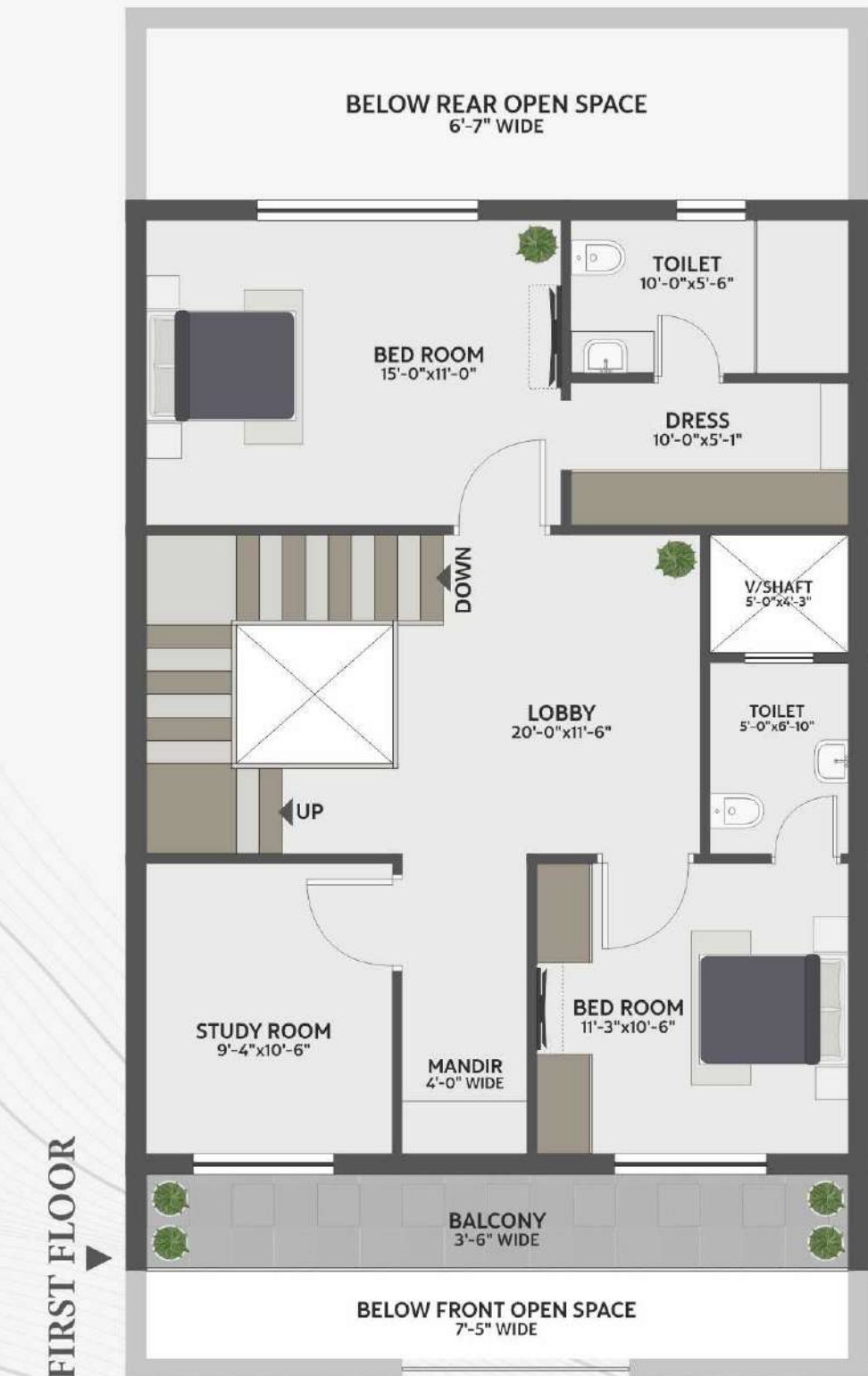
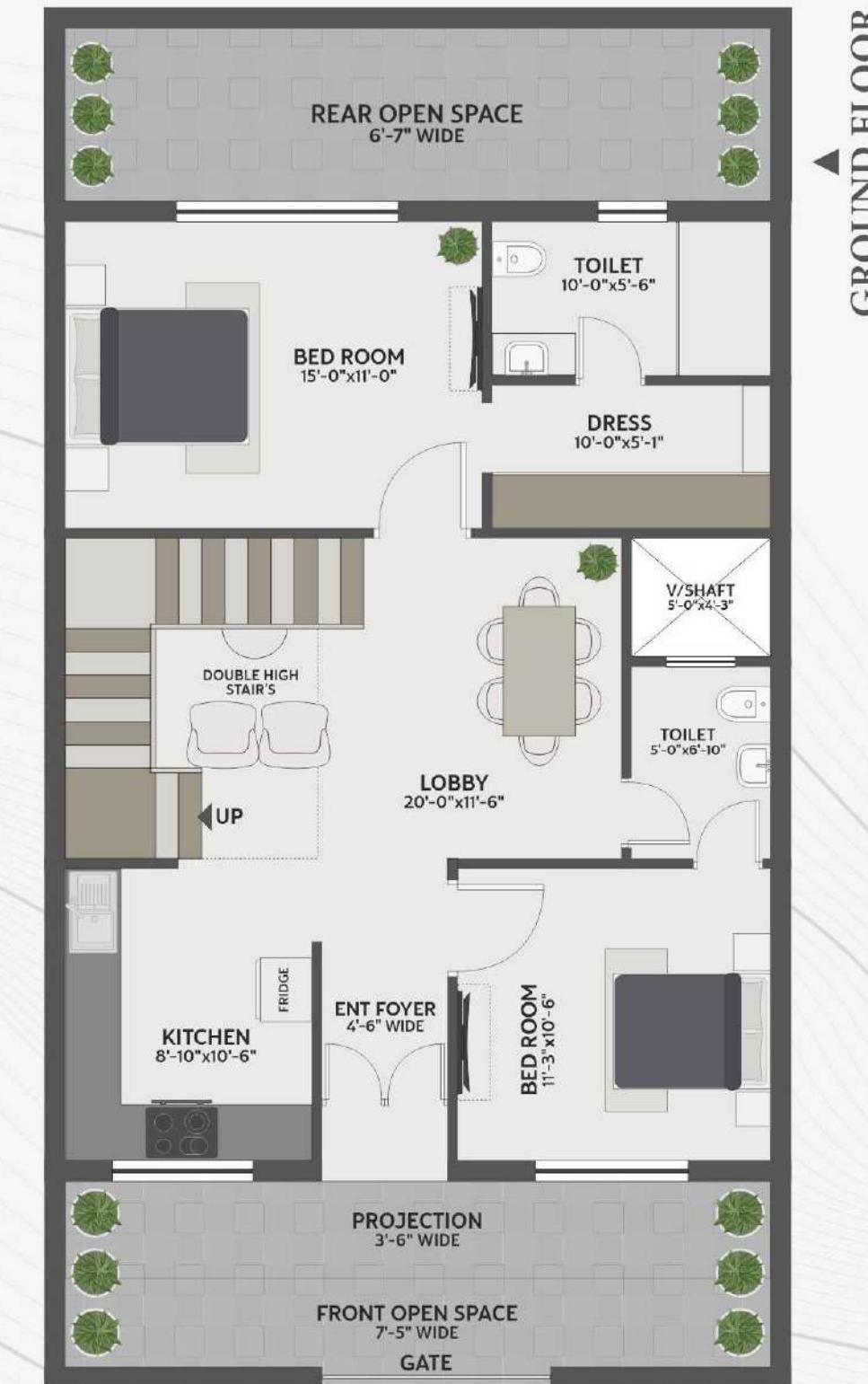
142.98 Sq. Yds.

Plot Size : 26'-1½" x 49'-3"

ARTISTIC RENDER



FLOOR PLANS





BLOCK - B

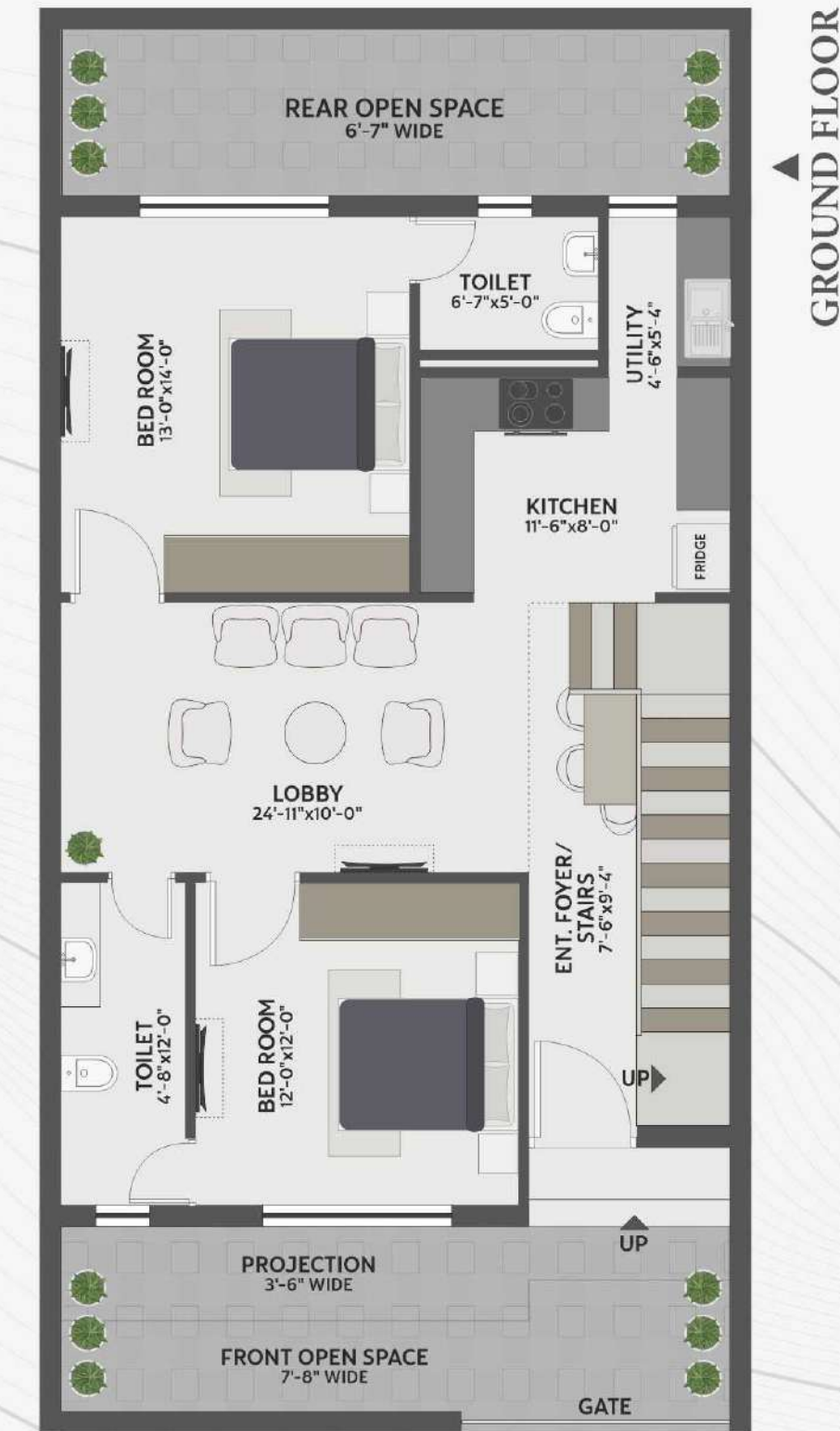
149.68 Sq. Yds.

Plot Size : 25'-8" x 52'-6"

ARTISTIC RENDER



FLOOR PLANS





BLOCK - C

137 Sq. Yds.

Plot Size : 27'-2" x 45'-4½"

ARTISTIC RENDER

FLOOR PLANS





BLOCK - D

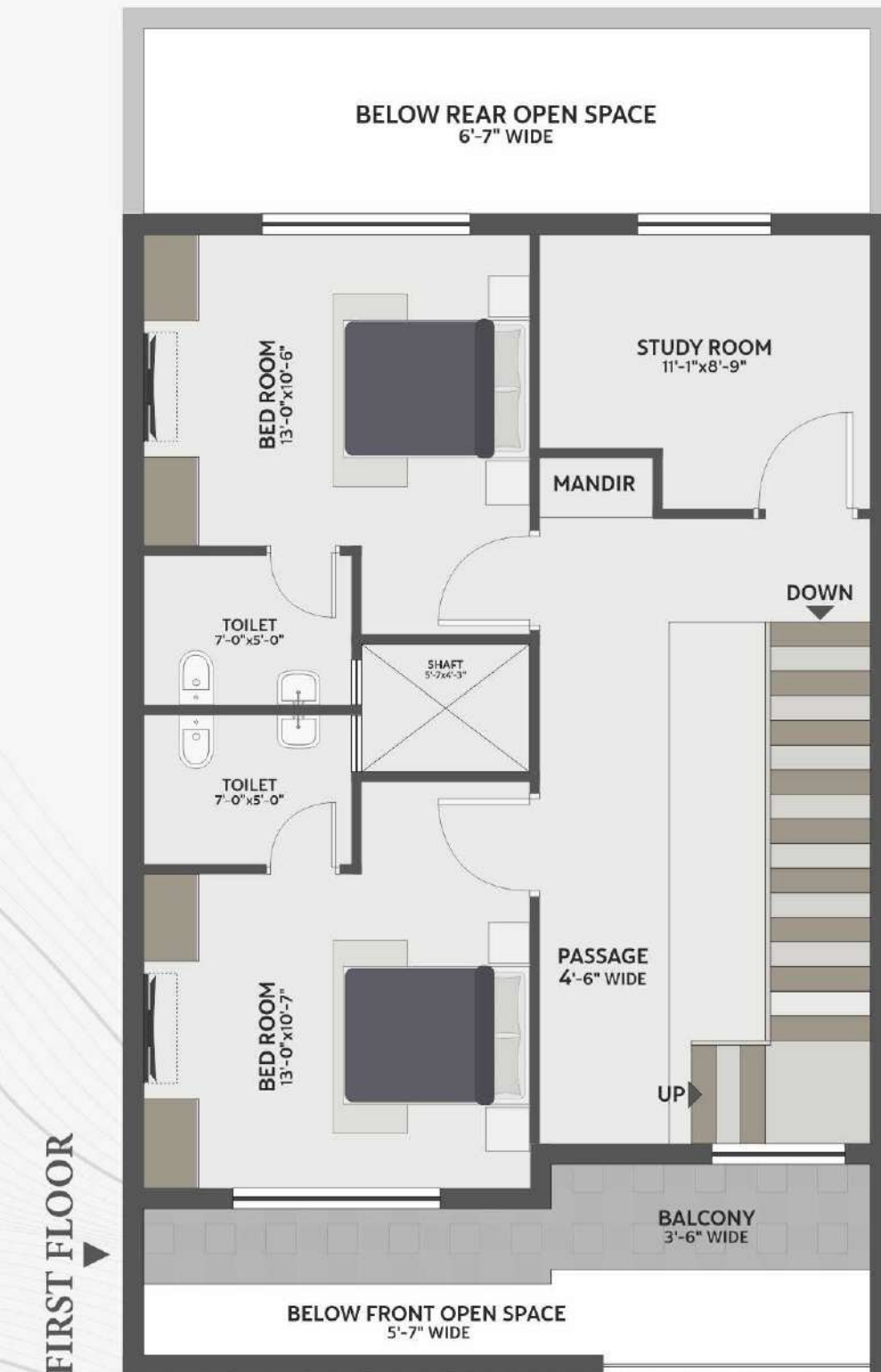
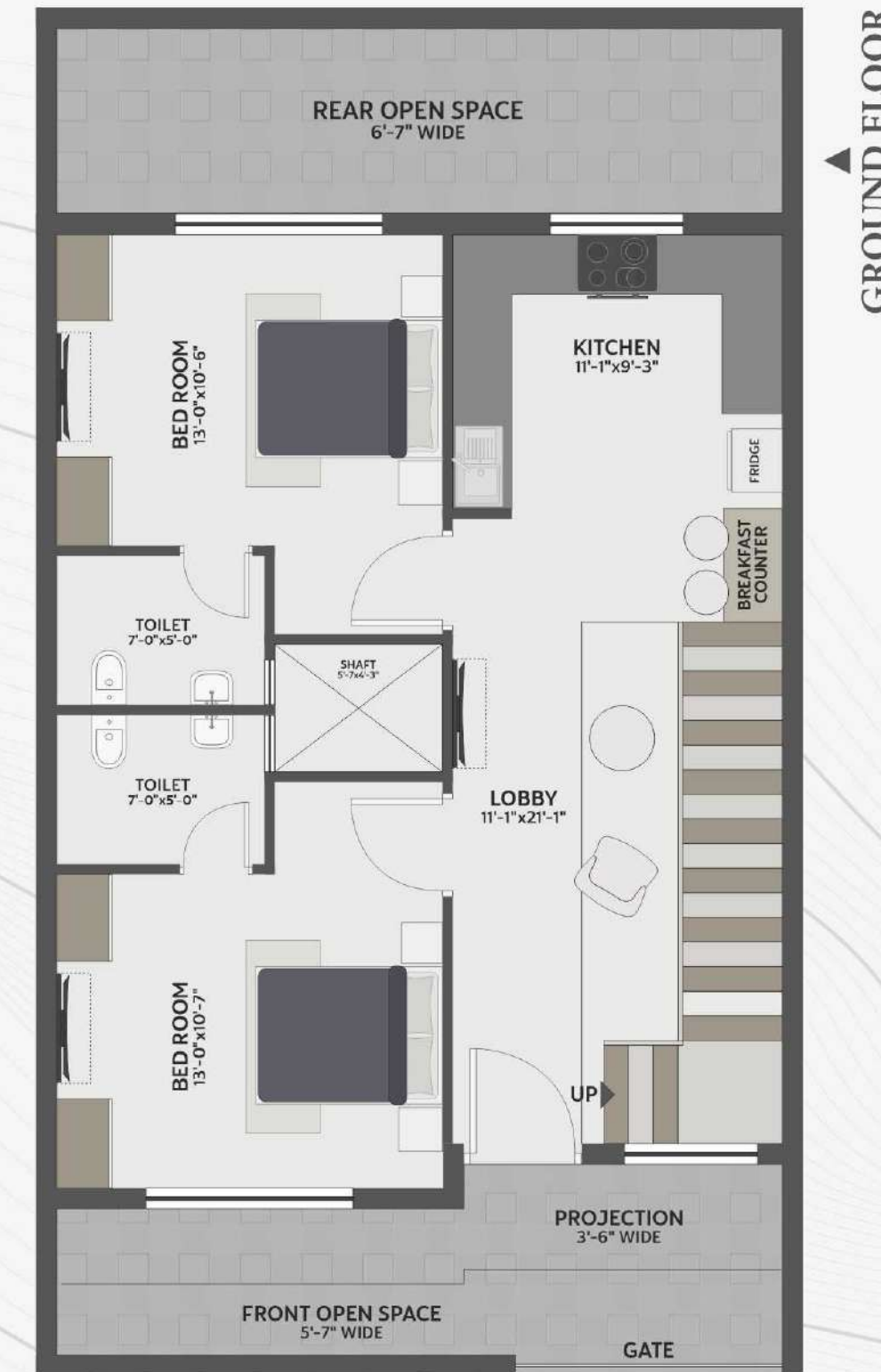
131.24 Sq. Yds.

Plot Size : 25'-3" x 45'-11"

ARTISTIC RENDER



FLOOR PLANS



SPECIFICATIONS

Green & peaceful living entertainment, gated colony, well lit roads and exteriors, three tier security services, dedicated utility area and backyard, beautifully landscaped...

LIVING/ DINING / BEDROOM

- Vitrified Tiles (Size 24" x 48" or above).
- Premium quality cupboards in all bedrooms.
- Partly false ceiling in drawing-dining area.
- Designer fans in drawing and dining areas.
- Spacious living space.
- Adequate light/ ventilation.
- Modular electrical switches, sockets and electrical fittings.
- Acrylic emulsion paint on walls.
- UPVC sliding window and glazing in exterior.
- Melamine Polished Teak wood frames with designer flush doors in interiors.

FLOORING

- Good quality tile in living/ dining space/ bed rooms.
- Anti-skid ceramic tiles in bathroom, kitchen, balconies & common areas.

WALL FINISH

- Acrylic emulsion paints of architects choice in interiors.
- Weatherproof acrylic emulsion paints of architects choice in exteriors.
- Ceramic tile dado up to ceiling height in bathrooms and 2' over counter in kitchen.

BATHROOM TOILET

- Anti-skid ceramic tile flooring (Size 24" x 24" or above).
- Ceramic tile dado up to ceiling height (Size 24" x 24").
- Good quality C.P. and sanitary fittings of Jaquar or equivalents.

KITCHEN

- Anti-skid ceramic tile flooring (Size 24" x 24" or above).

LANDSCAPING/ WATER SUPPLY

- Beautiful designed front garden.
- Grass paver tiles in front yard.
- Overhead water tank for each floor.

SECURITY

- Secure gated community manned by guards at main entrance .
- CCTV at strategic points.
- Automatic boom barriers with manual gates at main entrance.

ELECTRICAL FITTING

- LED lights, fans and exhaust fans on all floors.
- Copper wiring.
- Good quality modular switches.
- MCB and DB as per ISI standard.
- TV, telephone points at appropriate places.

ADDITIONAL FEATURES

- Seismic Zone compliant, (earthquake resistant) RCC framed structure.
- Permanent weather proof exterior paint with cladding and texture paint in selected areas.
- UPVC sliding windows and glazing and provision of mosquito mesh.
- Selected good quality lock set and suitable hardware for windows and doors.
- Stainless steel railings in stairs.



THE INCREDIBLE LOCATION

Live a privileged life in one-of-a-kind residential tower at "Windsor Homes" that offers the ultimate lifestyle, vibrant, with every contemporary amenity just around the corner. Here you are close to premium neighbourhoods, work spaces, night life, entertainment, education, city connectivity and leisure, a place where dreams really can, and do come true.

NEARBY DESTINATIONS :

- BUS STAND
- HOSPITALS
- SCHOOLS
- MULTIPLEX
- GRAIN MARKET
- HUDA SECTOR
- COMMERCIAL (MARKET)
- VEGETABLE & FRUIT MARKET

